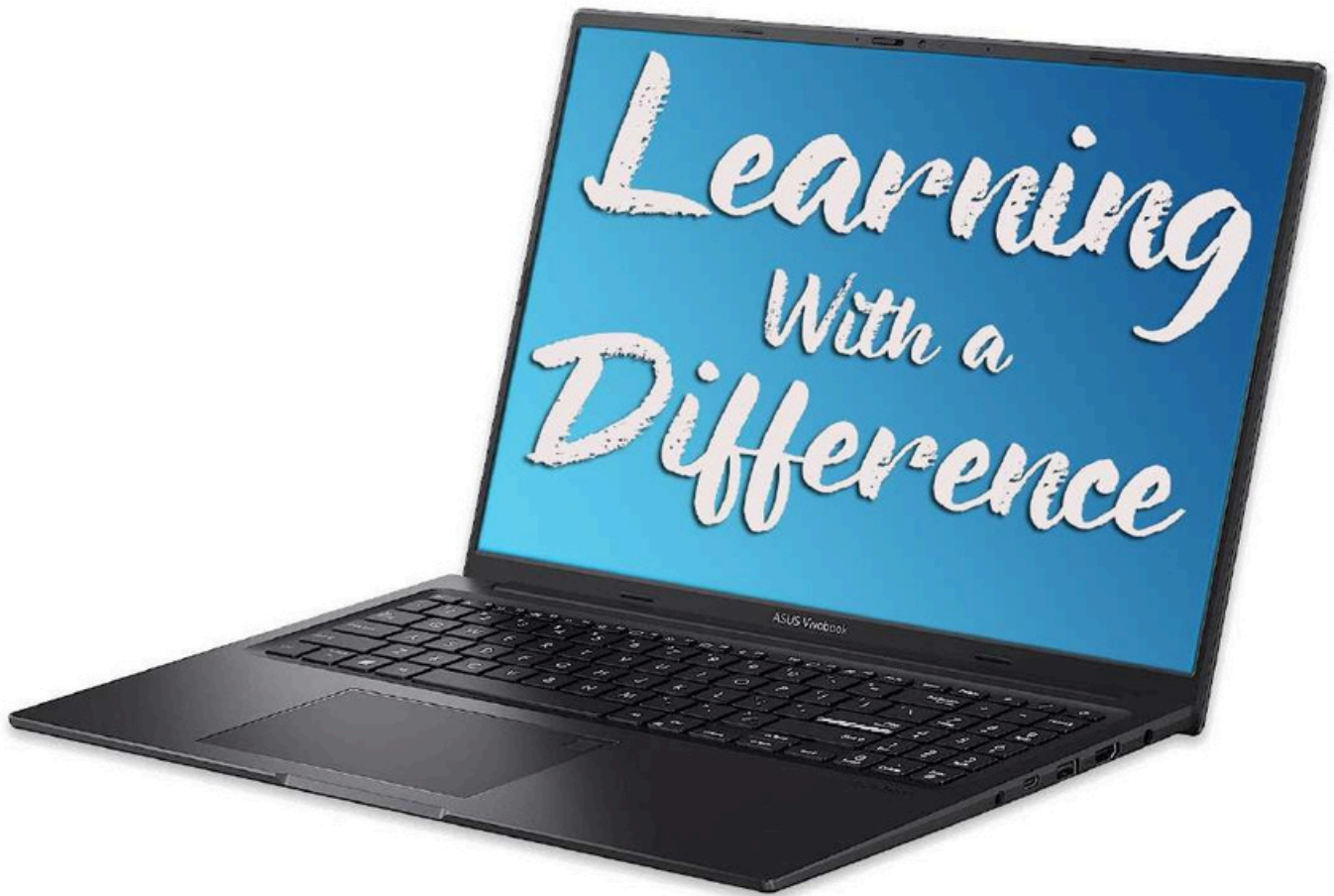




Ch. Rahmat Ali Schools

Preschool - Girls School - Boys School



CH. JAHANZAIB
AHMAD

1167



MUHAMMAD
OMAR

1137



ABU BAKER
AHMAD AMJAD

1108



MUHAMMAD
IBRAHIM NASEEM

1107



Salma Ibrar

1155



Ayesha Kamran

1149



Irza Fatima

1129



Syeda Aliha Tahzeeb

1124

SHINING STARS
OF
MATRIC EXAM
2025

Ch. Rahmat Ali Memorial Trust



A Brief Introduction

Ch. Rahmat Ali Memorial Trust presents its significant contribution in education service over the past three decades through its three educational institutions (Girls, Boys, and Preschool). Nearly 2,300 students benefit from education on its spacious campuses, which accommodate classes ranging from playgroup to class X. The overarching goal of the Trust is to empower young minds to explore their interests and talents, fostering their development into knowledgeable individuals capable of critical thinking, articulation, and determination. Emphasizing a holistic academic approach, the institution instills self-awareness and discipline in its students through a balanced focus on academics, extracurriculars, and community service for a positive change in society.

Growth Journey

Ch. Rahmat Ali Schools

1992
Girls School

2000
Girls College

2024

institutions Re-Organized
as a chain school

1996

Boys School

2022

Girls College
converted to
Preschool

2025

Capacity
Expenditure
& Upgradation



Headmistress
Mrs. Sonia Rubab
MA. PGD



Headmistress
Mrs. Fatima Abdul Jabbar
M. Phil ELM



Headmaster
Mr. Qamar Abbas
M.A Eng, B.ed



Admin Head
Ms. Shabana Mazhar
M.A



Dr. Syed Usman Wasti
President

Ch. Rahmat Ali Memorial Trust
Ch. Rahmat Ali Schools have an impactful legacy of over 30 years. This Newsletter is a maiden effort to present the activities and social impact of all three schools spanning from January to June 2025. Hope, this outreach effort keeps our patrons updated and associated with The Trust School.



Mr. Khalid Mahmood Rasool
General Secretary
Ch. Rahmat Ali Memorial Trust
Ch. Rahmat Ali Memorial Trust has a 30 years legacy of quality education services for the community. Despite having best student-teacher ratio, highly qualified faculty, purpose built buildings and quality education, Ch. Rahmat Ali Schools have been imparting education at 40% less cost compared to its peer group schools. On top of it all, 73% of all Financial Support disbursed to orphans & needy students.



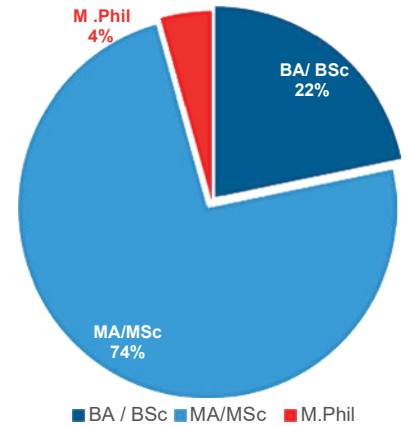
MRS. NAJAM-U-SABAH
Principal
Ch. Rahmat Ali Schools

At Ch. Rahmat Ali Schools, we fulfill the community's growing need for quality education—offering a nurturing environment for children aged 3.5 to 15 years. We believe education goes beyond books. Our mission is to inspire a love for learning, build critical thinking, problem-solving skills & develop socially responsible individuals ready to contribute to their families & society.

Faculty Summary

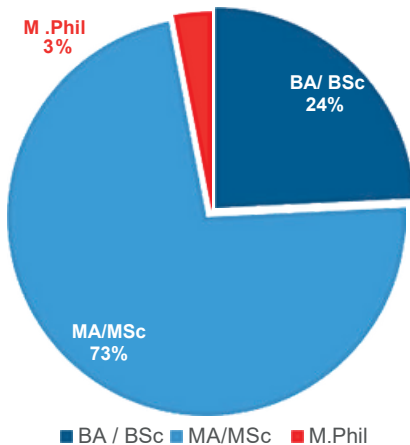
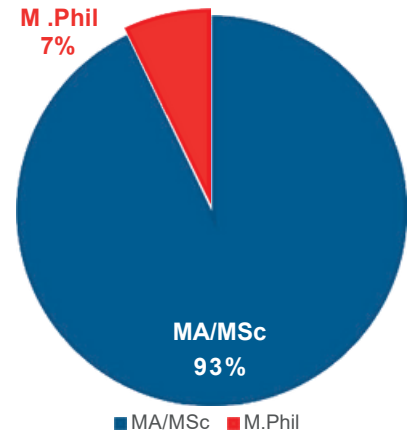
Preschool

- Parveen MA, BE.d
- Ayesha Ejaz M.A Saira Sadiq
- Rabia Waheed BSCS
- Noreen Namat M.B.A
- Faiza Riaz B.Ed (Hons.)
- Areej Shamim
- MSc M.A Ilqa Akram
- M.Phil Sabiha Tanveer
- Syeda Uzma Batool MCS, B.Ed
- Asifa Rizwan BA, B.Ed
- Qurat-ul-Ain B.A
- Wajiha Kausar B.A
- Sumaira Ishtiaq M.A
- Ha za Shagufta Mehar M. Com
- Sadia Sharif MA, M.Ed
- Jaweria Ra que M.Sc
- Areeba Zahid BS
- Rumaisa Mushtaq B. ED Hons
- Farwa Tariq B.COM



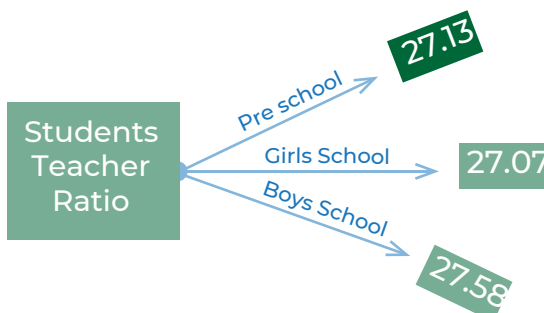
Girls School

- Rubina Shahnaz M.A(isl & arabic), M.Ed
- Rukshanda Zeeshan M.A Fozia Imran
- M.Sc, B.Ed
- Mahnoor Ahmed M.S
- Neelam Sha que
- M.A./M.Ed. M.A, B.Ed, DIA Iram Adnan Aamina Nadeem M.A.
- Tasneem Fatima M.Sc, M.Ed
- Nazia Kalsoom B.Sc., M.Ed
- Aneela Rasheed B.Sc Hon. Farwa Afzal
- M.Sc Saba Zahid
- BS
- Muhammad Saleem MCS Mrs. Nushaba B.A, LLB
- Rukhasana Zafar (R.) B.A, M.Ed, 3.5Y Dip.
- Kishwar Jabeen M.Sc
- Rabbia Siddiqui MCS
- Warda Tariq MS Pharm.
- Asma Naz
- M.A M. A. (Edu.) Amara Khan Fozia Amin M.A, B.Ed
- Shagufta Malik M.A, B.Ed
- Shazia Noureen M.A, M.Ed
- Miss Farhat Imran M.Sc. Comp. Sc.
- Sajida Maqbool M.Sc, M.Ed
- A fa Sajjad M. Phil, A.D.E
- Saira Razzaq M.A, M.Ed
- Shumaila Perveen M.Phil, M.A(eng&eco) M.Ed



Boys School

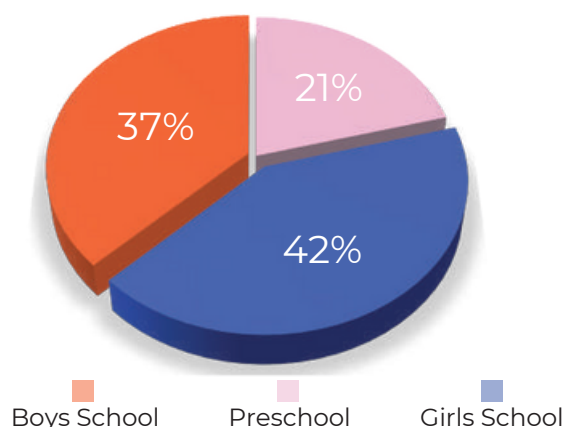
- Rahat Ibadat ali (Red.) M.A Eco, B.ed
- Shagufat Arif M.A Pol Sci, B.ed
- M. Irfan Sulehri M.A Urdu
- Bilal Taj Deen BS (Physics)
- Jahazaib Farooq M.A (Phys Edu)B.Ed
- Muhammad Javed B.A Simple
- A ya Samra MSc (Chem)
- Areeba Nouman BED (HONS)
- Asad Ullah Bin Latif BCS
- Erum Salman MSC(Economics)
- Asifa Perveen M.A Urdu, B.ed
- Nasrullah Khan B.A, PTC
- Faiza Sarwar B.A. B.Ed.
- Shazia Ibrahim M.Ed English
- Tayyaba Muzammil MSc. Psychology
- Nighat Bano M.A Pol Sci, B.ed
- Warda Tashfeen M.A Pol Sec
- Salman Kaleem BASimple
- Adeel Ahmed M.Phil (Pol Sci)
- Ayesha Marriyam Master (Edu)
- Ahmed Waqas BS.IT
- Sidra Arslan M.A Education
- Shaeen Akhtar M.AIsl, B.ed
- Samina Qamar MSc.Bio, Chem, B.ed
- Muhammad Shahid BSURDU
- Liaqat Ali BSc (Chem)
- M. Azam Bhatti B.A Simple
- Shahid Habib B.A. B.Ed
- Muhammad Usman BS Mathematics
- Ahmad Hassan BS(Chemistry)
- Maliha Asad M.A (Education)
- Rao Altaf Hussain M.A(Isl), B.Ed
- Rida Aslam BSc.DoubleMath



Financial Support Programs

At Ch.RahmatAli Schools, we firmly believe that quality education should never be limited by financial constraints. In alignment with this mission, more than 30% of our total students' body currently benefits from various need-based and merit-based financial support programs run under the banner of the Ch. Rahmat Ali Memorial Trust. The financial impact of this program exceeds PKR 12 million annually, a commitment which reflects the Trust's unwavering dedication to educational equity and social responsibility.

Scholarship Beneficiaries by School Campus (in %)



Students Benefiting from Need Based Scholarships & Financial Support

Category	Pre School	Girls School	Boys School	Total
Orphan	17	55	67	139
Need base	114	85	136	335
Siblings	2	117	25	144
Employee	12	15	12	39
Academic Excellence	NA	21	20	41
Total	145	293	260	698
% of Enrolled	23%	39%	29%	30%

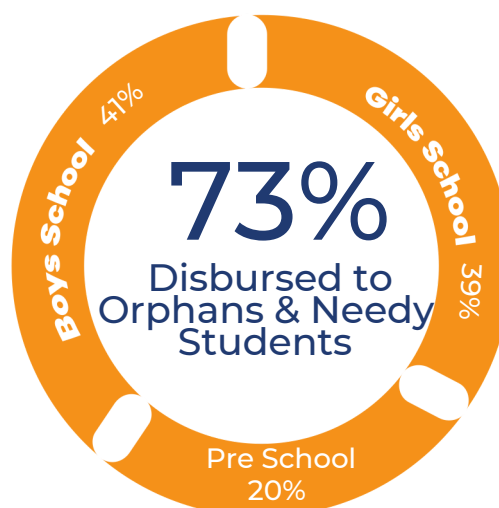
Annual Financial Allocation for Scholarships and Subsidized Education

Total Rs. 11,866,200

Pre School Rs. 2,365,800

Girls School Rs. 4,695,600

Boys School Rs. 4,804,800



Annual Scholarship Allocation by Campus (in % & PKR)

Category	Pre School Rs.	Girls School Rs.	Boys School Rs.	Total Rs.	Allocation %
Orphan	556,800	1,821,000	2,182,800	4,560,600	38%
Need base	1,521,000	929,400	1,639,800	4,090,200	35%
Siblings	21,600	1,263,600	270,000	1,555,200	13%
Employee	266,400	333,000	266,400	865,800	7%
Academic Excellence	NA	348,600	445,800	794,400	7%
Total	2,365,800	4,695,600	4,804,800	11,866,200	100%

Glimpse of Curricular & Co-curricular activities

05



Rana Sikandar Hayat, Provincial Minister of School Education Punjab



Mega Art Event



Magic Show



Intra School Debate



Fun Gala



Award Ceremony



Career Counseling workshop



Professional Development Program



Parent Teacher Meetings (PTM)



Prize Distribution Ceremony - Chief Guest, Mr. Javed Iqbal, Famous Cartoonist

Student Endorsements



My school experience was truly special. The teachers were kind, helpful, and always encouraged me to do my best. I always felt supported and motivated from my teachers. Without their encouragement, I would have never been able to achieve this.

Salma Ibrar

My school experience has been very memorable and full of learning. The teachers are kind, helpful, and always encourage us to do our best. The environment at school is friendly, safe and perfect for studying. I made many good friends and enjoyed participating in different activities. Overall, my school life has given me great knowledge and beautiful memories.



Zainab Zauhair



My experience at Ch. Rahmat Ali Boys School has been truly wonderful. I have studied here from playgroup all the way up to matric. Over the years, I have learnt and grown both academically and personally. The teachers have always been supportive, kind, and dedicated, and their guidance has played a big role in shaping who I am today.

Chaudhry Jahanzaib Ahmad

Alumni Highlights



"Growth, and great memories that I still cherish."

Laiba Saeed

Session: 2015-2017

**Medical Officer at
Lahore General Hospital**



***"More than a school—
it's where futures begin
and dreams take shape."***

Sidra Qadri

Session: 2010-2012

**Senior Audit Associate &
Tax Practitioner**



"Looking back, my school days were a treasure. Without the incredible support and guidance of my kind teachers, I would not be what I am today."

Aqsa Zaman

Session: 2011-2013

**Researcher in Cancer Biology at
University of the Punjab**



"An institute that laid a solid foundation and played a key role in shaping me whatever I am today."

Zara Masood

**Session: 2015-2017
Architectural Engineer**



***"Beyond classrooms –
it's where potential is discovered
and futures are built."***

Burhan Zaheer

Session: 2010

**Electrical Engineer
Canal Magistrate**



***"A place to grow minds,
shape character,
and ignite ambition."***

Shaharyar Tahir

Session: 2012

**Dr. in pharmaceutical –
Manager Marton
DOW**

Fee Comparison with Peer Group Schools

School Category	Private Schools (without Sports / Grounds)	Chain Schools (with Sports Infrastructure)	Ch. Rahmat Ali Schools (With purpose built building, spacious classrooms & sports infrastructure)
Fee Structure	Rs. 40,000 to 50,000 (per month)	Rs. 50,000 to 1,05,000 (per month)	Rs. 3,700 (per month)

Ch. Rahmat Ali Schools are presently supporting hundreds of orphans and underprivileged students, ensuring they have access to quality education, books, and a nurturing environment. Yet, the reality remains that countless more children are still waiting for the same opportunity, the chance to learn, to grow, and to dream. We appeal to your compassion and generosity to stand with us in this noble mission.

EDUCATE A CHILD - SPONSOR EDUCATION

Invest in a brighter future by supporting a child's education through Chaudhry Rahmat Ali Schools.



Adopt an Orphan

Annual Cost: Rs. 55,000/-
Covers school fee, books, and uniform



Adopt a Needy Student

Annual Cost: Rs. 55,000/-
Covers school fee, books, and uniform

Scholarship for Brilliant Students

Annual Cost: Rs. 48,000/-
Covers school fee & Allied expenses

Why Sponsor?

- ✓ Despite having 60% Less Fee compared to peer schools, more than 30% of students benefit from financial support.
- ✓ 73% of financial support delivered to orphans and needy students
- ✓ Your support contributes to equity in education and builds stronger communities.
- ✓ Together, we can ensure that no child is left behind due to financial constraints.





Extension & Upgradation Cost Summary (1st Phase) 20 Million Rupees



Boys School



Preschool

Extension Project details



13 Classrooms



1 Activity Room



1 Audio-Visual Library

You may help in many ways

Cost to Build and Furnish One Classroom:	Rs. 1.2 million
Cost to Sponsor the Activity Room:	Rs. 2 million
Cost of Establishing a Fully Equipped Library Room:	Rs. 2.4 million

Ways To Donate:

For Donation



BankIslami

Ch. Rahmat Ali Memorial Trust
A/C: 201139351240201
IBAN NO: PK84BKIP0201139351240201

For Zakat



BankIslami

Ch. Rahmat Ali Memorial Trust
A/C: 201139351240203
IBAN NO: PK30BKIP0201139351240203

